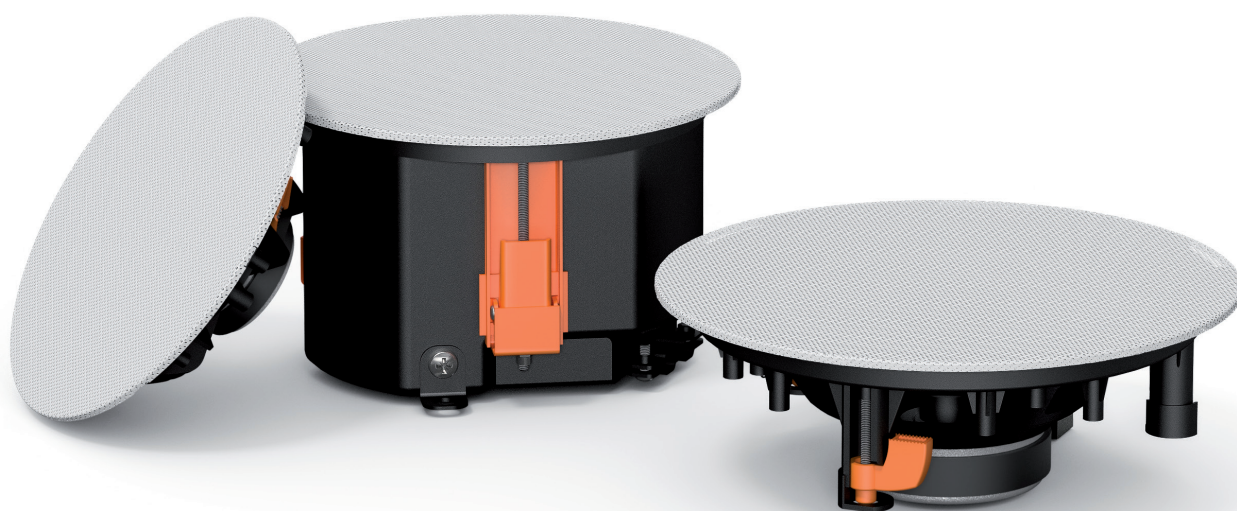


Professional
audio solutions



NEW PRODUCTS SPRING 2018

PRE2xx series

Stereo preamplifiers



The PRE2xx series pre-amplifiers are solutions for applications where a large number (up to 8) of microphones (or other mono balanced audio inputs) need to be mixed to two (PRE220) or four (PRE240) output zones. The multifunctional stereo design with a total of 10 inputs allows connection for any type of audio source such as microphones, Bluetooth devices or line level audio sources.

Channels one up to eight are balanced inputs, allowing the connection of microphones or line level audio sources with the ability of enabling 48V phantom power to each input. They feature 3-band tone control and talk-over for priority announcements. The other two (9 and 10) inputs are unbalanced stereo line inputs allowing connection of any type of line level audio source.

An integrated Bluetooth receiver and a front panel 3.5mm jack offers convenient wired or wireless connection possibilities for mobile and portable devices including laptops, smartphones and tablets.

The front panel includes a master volume control with 2-band tone control and LED VU bar for each output. Each input section is accommodated with input mixing dials and output selection switches.

A priority mute for each zone output suppresses all (non-priority) music sources in case of contact closure, allowing linking autonomous alarm systems.

PRE220

Two zone 10-channel stereo pre-amplifier



- ① Balanced stereo line outputs (up to 4)
- ② 2 x Unbalanced stereo line input
- ③ 8 x Balanced line / mic inputs with talkover, phantom (48V) & 3 band tone control

PRE240

Four zone 10-channel stereo pre-amplifier



- ▶ 3.5 mm jack input on front
- ▶ Integrated Bluetooth receiver
- ▶ Priority mute contact input
- ▶ Extension antenna available

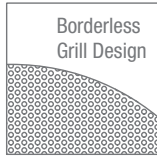
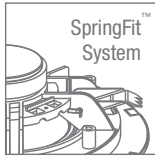
	THD+N	Signal / Noise	Frequency Response	Dimensions	Weight
PRE220	< 0.05 dB (mic) < 0.01 dB (line)	> 80 dB (mic) > 100 dB (line)	20 Hz - 20 kHz	482 x 88 x 335 mm	4.25 kg
PRE240	< 0.05 dB (mic) < 0.01 dB (line)	> 80 dB (mic) > 100 dB (line)	20 Hz - 20 kHz	482 x 88 x 335 mm	4.40 kg

CENA series

SpringFit™ ceiling speakers

The unbeatable one. The CENA series are full-range ceiling speakers, designed to offer an unmatched solution for large scale public address projects. The SpringFit™ fixation offers the fastest possible installation time of any speaker available on the market, while the borderless grill design is absolutely unseen for any ceiling speaker in this segment. The selection of high-quality cone materials guarantee an exceptional intelligibility and background music performance.

- Removable logos for most discrete use





CENA506

The CENA506 features a 5" broadband driver with a continuous power handling of 10 Watt (RMS) and maximum power handling of 20 Watt. They are fitted by multi-tapping 100V line transformers with tapings for 6W, 3W.

100V



CENA706

The CENA706 features a 6.5" broadband driver with a continuous power handling of 10 Watt (RMS) and maximum power handling of 20 Watt. It is fitted with a multi-tapping 100V line transformer with tapings for 6W and 3W.

100V



CENA812

The CENA812 features a 8" broadband driver with a continuous power handling of 20 Watt (RMS) and maximum power handling of 40 Watt. It is fitted with a multi-tapping 100V line transformer with tapings for 12W, 6W and 3W.

100V

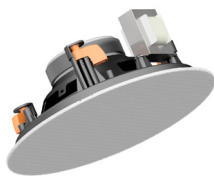
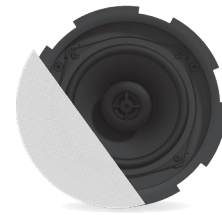
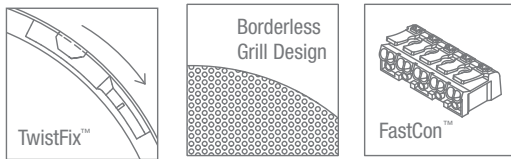
	Max power	RMS power	Max SPL	Sensitivity 1W / 1 m	Power taps / impedance	Freq response +/- 3 dB	Cut-out dimensions	Dimensions
CENA506	20 Watt	10 Watt	103 dB	93 dB	6W / 3W	100 Hz – 15 kHz	Ø 150 mm	Ø 180 mm x 57 mm
CENA706	20 Watt	10 Watt	106 dB	96 dB	6W / 3W	100 Hz – 15 kHz	Ø 167 mm	Ø 193 mm x 67 mm
CENA812	40 Watt	20 Watt	112 dB	99 dB	12W / 6W / 3W	100 Hz – 15 kHz	Ø 210 mm	Ø 232 mm x 90 mm

CIRA series

QuickFit™ 2-way ceiling speakers

Designed to offer the best value for money ratio. The CIRA series are coaxial 2-way ceiling speakers featuring exceptional intelligibility and musical performance. The TwistFix™ borderless grill design offers easy but solid assembly and a completely seamless transition from grill to ceiling. This results in a perfect blend in to its environment. The QuickFit™ installation system combined with FastCon™ connector offers lifetime stability and great installers convenience.

- Removable logos for most discrete use
- Optionally available outdoor resistant grills



CIRA506

The CIRA506 features a 5 ¼" driver using polypropylene cone material, combined with a 1" Mylar tweeter fitted with a phase plug for excellent off axis performance. The selected materials guarantee a low distortion performance with smooth and flat frequency response. A continuous power handling of 30 Watt (RMS) and maximum power handling of 60 watt is achieved, while fitted with a multi-tapping 100V line transformer with tapings for 6W, 3W, 1.5W and an 8 Ohm bypass connection.

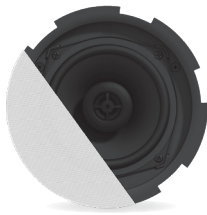
Outdoor front grills

A variety of grills for the CIRA speakers are optionally available, including a selection of most common used RAL colors and electroplated grills for installation in applications with high levels of humidity or permanent outdoor installations.

- for CIRA5xx series speakers : GLI05/O
- for CIRA7xx series speakers : GLI07/O
- for CIRA8xx series speakers : GLI09/O



Specifications are preliminary and subject to change without notice



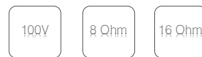
CIRA524

The CIRA524 features a 5 ¼" driver using polypropylene cone material, combined with a 1" Mylar tweeter fitted with a phase plug for excellent off axis performance. The selected materials guarantee a low distortion performance with smooth and flat frequency response. A continuous power handling of 30 Watt (RMS) and maximum power handling of 60 watt is achieved, while fitted with a multi-tapping 100V line transformer with tapings for 24W, 12W, 6W and an 8 Ohm bypass connection.



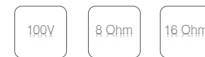
CIRA724

The CIRA724 features a 6.5" driver using polypropylene cone material, combined with a 1" Mylar tweeter fitted with a phase plug for excellent off axis performance. The selected materials guarantee a low distortion performance with smooth and flat frequency response. A continuous power handling of 30 Watt (RMS) and maximum power handling of 60 watt is achieved, while fitted with a multi-tapping 100V line transformer with tapings for 24W, 12W, 6W and an 8 Ohm bypass connection.



CIRA824

The CIRA824 features a 8" driver using polypropylene cone material, combined with a 1" Mylar tweeter fitted with a phase plug for excellent off axis performance. The selected materials guarantee a low distortion performance with smooth and flat frequency response. A continuous power handling of 40 Watt (RMS) and maximum power handling of 80 watt is achieved, while fitted with a multi-tapping 100V line transformer with tapings for 24W, 12W, 6W and an 8 Ohm bypass connection.



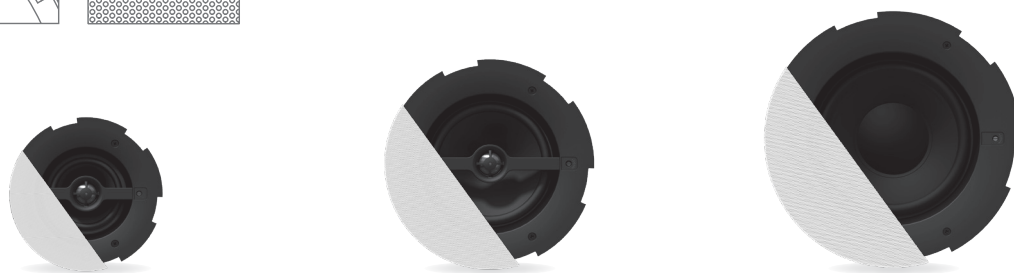
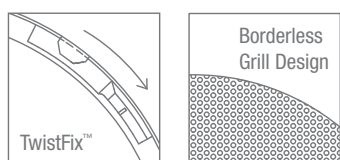
	Max power	RMS power	Max SPL	Sensitivity 1W / 1 m	Power taps / impedance	Freq response +- 3 dB	Cut-out dimensions	Dimensions
CIRA506/W	60 Watt	30 Watt	102 dB	87 dB	6W / 3W / 1.5W / 8 Ω	60 Hz – 20 kHz	Ø 170 mm	Ø 193 mm x 83 mm
CIRA524/W	60 Watt	30 Watt	102 dB	87 dB	24W / 12W / 6W / 8 Ω	60 Hz – 20 kHz	Ø 170 mm	Ø 193 mm x 83 mm
CIRA530D/W	60 Watt	30 Watt	102 dB	87 dB	16 Ω	60 Hz – 20 kHz	Ø 170 mm	Ø 193 mm x 83 mm
CIRA724/W	60 Watt	30 Watt	103 dB	88 dB	24W / 12W / 6W / 8 Ω	55 Hz – 20 kHz	Ø 200 mm	Ø 224 mm x 78 mm
CIRA730D/W	60 Watt	30 Watt	103 dB	88 dB	16 Ω	55 Hz – 20 kHz	Ø 200 mm	Ø 224 mm x 78 mm
CIRA824/W	80 Watt	40 Watt	105 dB	89 dB	24W / 12W / 6W / 8 Ω	40 Hz – 20 kHz	Ø 243 mm	Ø 243 mm x 82 mm
CIRA840D/W	80 Watt	40 Watt	105 dB	89 dB	16 Ω	40 Hz – 20 kHz	Ø 243 mm	Ø 243 mm x 82 mm

CALI series

SafeLatch™ ceiling speakers

Engineered for perfection. The CALI series range consists of full-range and subwoofer models constructed using premium materials and fitted with the patented SafeLatch™ mounting system. The TwistFix™ borderless grill design offers easy but solid assembly and a completely seamless transition from grill to ceiling. The construction with metal back-can guarantees premium performance under all circumstances, no matter what kind of ceiling or surface it is mounted to.

- Removable logos for most discrete use



CALI424

The CALI424 is a 2-way ceiling speaker with rear-dome, constructed using a 4" polypropylene cone driver, combined with an coaxially mounted 1" aluminum dome tweeter which is fitted with a phase plug for excellent off axis performance. The 2-way construction combination with metal rear-dome guarantees premium performance for demanding applications. A continuous power handling of 30 Watt (RMS) and maximum power handling of 60 watt is achieved, while fitted with a rotary switch for tapping of the 100V line transformer with tapings for 24W, 12W, 6W and an 8 Ohm bypass connection.



CALI660

The CALI660 is a 2-way ceiling speaker with rear-dome, constructed using a 6.5" polypropylene cone driver, combined with an coaxially mounted 1" aluminum dome tweeter which is fitted with a phase plug for excellent off axis performance. The 2-way construction combination with metal rear-dome guarantees premium performance for demanding applications. A continuous power handling of 30 Watt (RMS) and maximum power handling of 60 watt is achieved, while fitted with a rotary switch for tapping of the 100V line transformer with tapings for 60W, 30W, 15W and an 8 Ohm bypass connection.



CALI880S

The CALI880S is an 8" in-ceiling subwoofer, constructed using a 8" polypropylene cone driver and fitted with a metal rear-dome. Designed to offer a low-frequency extension for installation with in-ceiling speakers. A continuous power handling of 80 Watt (RMS) and maximum power handling of 160 watt is achieved, while fitted with a rotary switch for tapping of the 100V line transformer with tapings for 80W, 40W, 20W and an 8 Ohm bypass connection.



	Max power	RMS power	Max SPL	Sensitivity 1W / 1 m	Power taps / impedance	Freq response +/- 3 dB	Cut-out dimensions	Dimensions
CALI424	60 Watt	30 Watt	101 dB	86 dB	24W / 12W / 6W / 8 Ω	105 Hz – 20 kHz	Ø 170 mm	Ø 192 mm x 110 mm
CALI660	120 Watt	60 Watt	106 dB	88 dB	60W / 30W / 15W / 8 Ω	65 Hz – 20 kHz	Ø 220 mm	Ø 242 mm x 120 mm
CALI880S	160 Watt	80 Watt	109 dB	90 dB	80W / 40W / 20W / 8 Ω	58 Hz – 350 Hz	Ø 270 mm	Ø 296 mm x 160 mm



Position 1

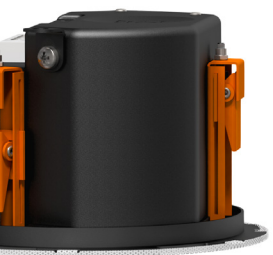
Connect and insert the speaker with SafeLatch™ through the installation hole.

The latching arms will automatically lock the speaker in place.



Position 2

Fix the speaker in position by tightening the screws of the SafeLatch™ mounting system.

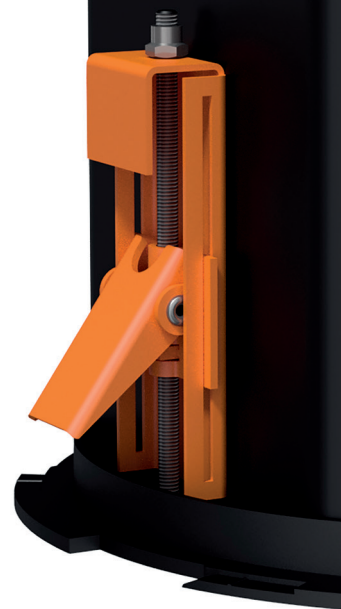


Position 3

Release the screws of the SafeLatch™ system to maximum for bending the latching arms inwards, which allows removal of the speaker.

SafeLatch™

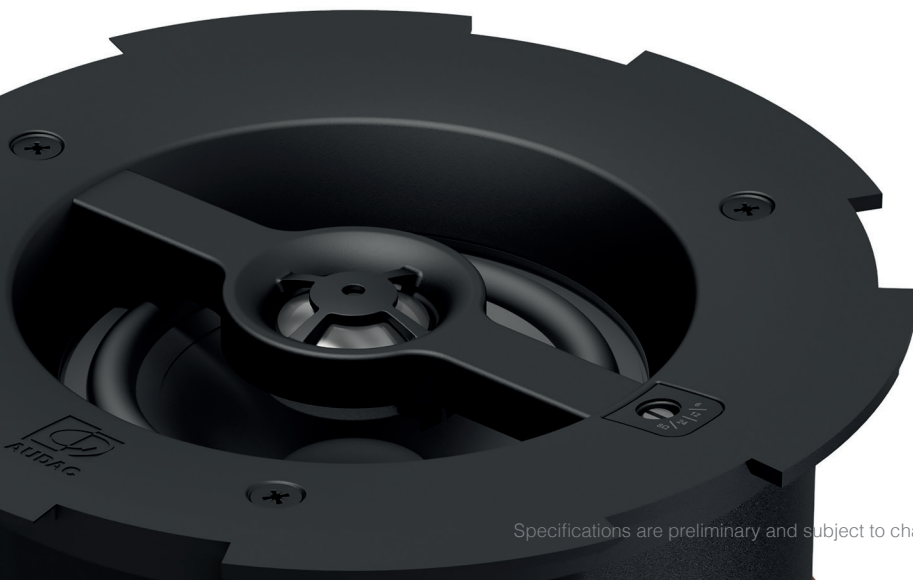
A patented SafeLatch™ mounting system guarantees the most convenient installation for the CALI series speakers. The latching arms automatically lock in place once inserted through the cutout hole. This gives the installer both hands available for directional placement and tightening of the fixation.



Tile bridge

The TBA series tile bridges are optional accessories for installing the CALI series speakers into 60 x 60 cm ceiling tiles in suspended ceiling applications. Designed to make mounting of the tile bridge possible through the speaker cutout.

- for CALI4xx series speakers : TBA40
- for CALI6xx series speakers : TBA60
- for CALI8xx series speakers : TBA80



IMEO series

Professional 2.1 Soundbar



The IMEO1 Soundbar features a slim and elegant design and includes all required functions for expansion of any audiovisual system with an impressive sound, while having a minimal hassle for installation. It's perfectly suited for installations such as classrooms, presentation rooms or meeting rooms where it can be used and installed in combination with screens, smartboards or projectors.

The acoustics feature two 1.5" high frequency drivers with an RMS rating of 15 Watt and a low frequency section composed of two 2.5" low frequency drivers with an RMS rating of 30 Watt, resulting in an overall 60 Watt RMS rating. The Class-D amplifier with integrated DSP processing and transmission line configuration for the low-frequency drivers offers a crystal

clear sound reproduction with stunning low-frequency response. Selectable DSP presets offer optimization for applications such as presentations, music playback or video's.

Various input possibilities such as an unbalanced line input, HDMI (ARC) input or SPDIF (optical and coaxial) allow compatibility with a variation of input sources, while Bluetooth allows wireless connections with portable devices.

An included IR remote control allows input selection, volume control and EQ preset selection while the unique and clever wall mounting bracket allows convenient mounting to walls on any kind of surface or location with an optimal guiding and coverage for the cables.

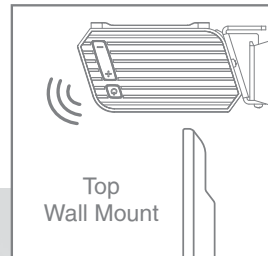
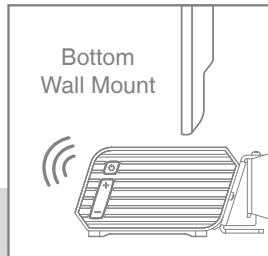
- ▶ 2.1 Soundbar
- ▶ Integrated subwoofer
- ▶ Preset equalizer modes
- ▶ Bluetooth wireless technology for streaming music
- ▶ HDMI (ARC with CEC) input
- ▶ Optical & coaxial inputs (SPDIF)
- ▶ Clever bracket system included
- ▶ Included remote control





Included mounting bracket

The included clever wall mounting bracket offers mounting possibilities to any kind of surface or location. The unique design allows two-directional installation with possibilities for installation on top or bottom of a screen or projection surface while having optimal directional placement of the speakers. The integrated guiding allows cable entry and fixation for a clean and neat installation.



WaveDynamics™ configurator



AUDAC System Manager is a multi-platform application for discovering and controlling AUDAC's line of intelligent devices. The latest update of this installers tool is added with a solution based on our WaveDynamics™ technology to optimize and protect your custom loudspeakers sets extremely accurate. This configurator is provided with a graphical visualization of all the combined digital audio filters and crossovers. Besides the existing SMA & SMQ amplifiers, the new PMQ quad-channel 100V amplifier and NOBA8A active bass cabinet can take advantage of its functions. All audio configurations can now be made in the AUDAC System Manager and exported to a USB drive for loading in a desired amplifier or speaker set.

CHA series

Compression horn speakers

The CHA series consists of 2-way horn loaded loudspeakers which are designed for long-throw, full range reproduction of music and speech in a wide variety of indoor and outdoor applications.



CHA530

The CHA530 is constructed of an 1" high frequency compression driver and a 5" mid/low frequency driver. The selection of high-quality components and acoustic engineering craftsmanship makes the CHA530 significantly better performing than other traditional horn speakers. A smooth frequency response and high efficiency ensures an extraordinary clarity of speech and extended frequency response for music.

The enclosure is constructed using high quality UV and impact resistant ABS materials and an included stainless steel mounting bracket allows secure mounting and tilting for perfect directional placement. This makes it comply with IP66 ingress protection requirements, resulting in a weatherproof solution for permanent outdoor installation.



CHA660

The CHA660 is constructed of an 1" high frequency compression driver and a 6.5" mid/low frequency driver. The selection of high-quality components and acoustic engineering craftsmanship makes the CHA660 significantly better performing than other traditional horn speakers. A smooth frequency response and high efficiency ensures an extraordinary clarity of speech and extended frequency response for music.

The enclosure is constructed using high quality UV and impact resistant ABS materials and an included stainless steel mounting bracket allows secure mounting and tilting for perfect directional placement. This makes it comply with IP66 ingress protection requirements, resulting in a weatherproof solution for permanent outdoor installation.



	Max power	RMS power	Max SPL	Sensitivity 1W / 1 m	Power taps / impedance	Freq response +- 3 dB	Dimensions	Weight
CHA530	60W	30W	113 dB	98 dB	30 W / 15 W / 7.5 W / 3.75 W	110 Hz - 16 kHz	310 x 215 x 330 mm	4.7 kg
CHA660	120W	60W	116 dB	99 dB	60 W / 30 W / 15 W / 7.5 W	100 Hz - 16 kHz	420 x 335 x 400 mm	6.7 kg

Speaker accessories

WMA series

Optional incline bracket for ATEO series

WMA20 : incline bracket for ATEO2

WMA40 : incline bracket for ATEO4

WMA60 : incline bracket for ATEO6



GFC series

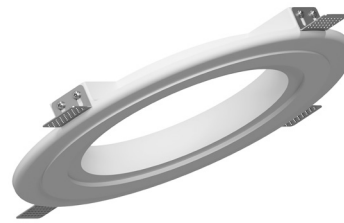
Gypsum ring for CELO series

GFC02 : gypsum flush mount for CELO2

GFC05 : gypsum flush mount for CELO5

GFC06 : gypsum flush mount for CELO6

GFC08 : gypsum flush mount for CELO8



Software updates

AUDAC Touch™

Event trigger button

A trigger button for programmed events on the FMP40 can now be added to the AUDAC Touch™ dashboard. This trigger can be customized with an icon and a custom text to clarify its use.

EASE address files

A substantial amount of our loudspeakers is now provided with EASE Address software files. With this free application, further improvement of the system setup and sound quality of your custom installations can be obtained with a graphical model.

Ease address files available for the full range of: ATEO, CELO, MERO, XENO and the WX302 speakers.

M2

Increase of contact inputs

Thanks to a new update, the M2 allows the option to virtually double the 8-physical contacts with the use of positive and negative flank triggering. As example: A voice file can be played when opening a contact and a different file is played when the contact is closed again.

AUDAC compatible with RTI control systems

AUDAC and the home automation brand RTI have started a collaboration, enabling RTI users to control AUDAC products with great ease. Now, all RS-232 and Ethernet control devices from AUDAC can be integrated effortlessly in the configuration of RTI's control systems.



audac.eu
info@audac.eu